



Key Features

- Beautiful 800x480 WVGA LCD with integrated multi-touch capacitive touch screen.
- Composite, S-Video or Component video inputs allow viewing analog video at up to 480i/576i/480p/576p resolution.
- Integrated 10/100 Base-T and 802.11 wireless Ethernet.
- Built-in bi-directional RS-232 port runs RTI one-way and two-way drivers without a separate control processor.
- Built-in high output IR port for direct control.
- Powered using power supply, CB8 connecting block or PoE (Power over Ethernet).
- Optional modules/processors provide additional control capabilities including two-way communication via RS-232/IP, sensing, IR and relay control.
- USB and Ethernet Programming.
- Stylish low-profile faceplate available in black or white (ships with white).
- Integrated mounting wings for easy retrofit installations (metal back box also available separately).

KX-7 Advanced In-Wall Touchpanel

The extraordinary KX-7 is packed full of features for complete control of entertainment, environment and security systems. The wall-mounted touchpanel has a slim profile along with a fully customizable interface rendered beautifully on a LCD touch screen. Concealed beneath this clean, sophisticated design is the amazing power available at your fingertips. Running on the RTI advanced control processor platform, the KX-7 has two-way communication capability built-in, allowing direct control and feedback from electronics such as media servers, lighting or security. In addition, analog video inputs make viewing everything from security cameras to satellite TV an enjoyable experience with resolutions up to 576p. Built-in wired and wireless Ethernet enable even more convenient functionality such as viewing digital video (motion JPEG), surfing the web, two-way control and updating.

Description

A beautiful 7" 800x480 WVGA multi-touch capacitive touch screen displays the completely customizable control interface. In addition, composite, S-video and component video inputs provide crystal clear video at up to 576p resolution. Built-in wired and wireless Ethernet provide two-way control, programming, digital video (motion JPEG) and web pages. The KX-7 10/100 Base-T connection even supports PoE (Power over Ethernet) to reduce cabling requirements and simplify installations.

The KX-7 takes touch panel control to new heights with a self contained control system. An infrared output allows control of devices up to 1000 feet away while an RS-232 port allows RTI two-way control drivers to run without a separate control processor. When combined with RTI accessory products, the KX-7 offers intuitive two-way communication for control and feedback from compatible electronic devices such as music servers, HVAC, lighting, and more.

A clean look, built-in advanced processing, video capabilities and convenient Ethernet options make the KX-7 the perfect control solution in any situation.

Call 952-253-3100

www.rticorp.com

Specifications

Power.....	+9VDC to +16VDC, 1A max
Power Management.....	Adjustable backlight brightness/proximity sensor
Touchscreen Display.....	High-brightness color TFT LCD
.....	Full VGA (800x480 pixels) with 65K colors
.....	Integrated high-resolution capacitive touchscreen
Display Size.....	7.0 in (177mm) diagonal
Display Backlight.....	Dual CCFL, 300nit
Infrared Output.....	Through control port, 200mA output
.....	Drives up to 1000 ft (300 m) of wire
Ethernet Port.....	10/100 Base-T with Power-over-Ethernet
Wireless Ethernet.....	802.11b/g
Operating Temperature.....	+32°F to +122°F (0°C to +50°C)
Operating Humidity.....	5% to 95% Non-condensing
Total System Memory.....	128M Bytes Flash (non-volatile) memory
Device Capability.....	Total number of devices is limited only by memory
Macro Capability.....	Unlimited steps in a single macro
.....	Total number of macros is limited only by memory
.....	Macro capability on every button
Communications.....	USB programming port
Video Input.....	Three, BNC Connectors
.....	Composite, S-Video or Component Analog Video
.....	NTSC/PAL/SECAM
Enclosure.....	High-impact molded ABS plastic
Front Plate.....	High-impact molded ABS plastic
Mounting.....	Integrated mounting wings, or screws through front plate
Installation Cut-Out (W x H).....	7.7 in (195mm) x 5.6 in (143mm)
Outer Bezel Dimension (W x H).....	8.5 in (217mm) x 5.9 in (151mm)
Total Depth in Wall.....	1.4 in (36mm), with video connector 2.1 in(53mm)
Weight.....	1.4 lbs (634g)
Warranty.....	One Year (Parts & Labor)



Also available in white.

5775 12th Avenue East, Suite 180, Shakopee, MN 55379
 PH: (952) 253-3100 • Website: www.rticorp.com

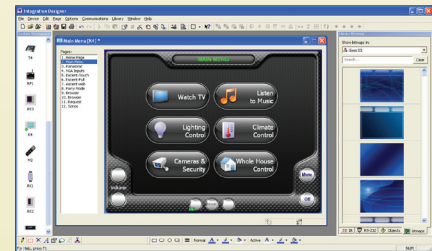
Accessories

XP-3	Advanced Control Processor
XP-6	Advanced Control Processor
XP-8	Advanced Control Processor
CB-8	Touchpanel Connecting Block
CPB-1	Control Port Connecting Block
ECB-5	IR Connecting Block
ESC-2	Ethernet Serial Converter
vIRsa Mouse	IR Emitter
CM-232	RS-232 Communication Module
VPS-1	Voltage Power Sensor
RCM-4	Ethernet Relay Module
RCM-12	Relay Control Module



Other RTI Products

Virtual Panel	PC Control Application
RTiPanel	Mobile Device Control Application
surfIR	Remote for Smart Phones & Tablets
T1-B	Universal System Controller
T2-B	Universal System Controller
T2-Cs+	Universal System Controller
T2-C+	Universal System Controller
T3-V+	Universal System Controller
T4	Universal System Controller
U2	Weather Resistant Controller
RKM-1	In-Wall Multi-Room Audio Keypad
RK1	In-Wall Keypad Controller
RK2	In-Wall Touchscreen Controller
RK3-V	In-Wall Touchscreen Controller
RK10	In-Wall Touchscreen Controller
RP-1	Remote Control Processor
RTiDock	Dock for Apple iPod®
AD-4	4x4 Distributed Audio System
AD-8	8x8 Distributed Audio System
CP-450	Four Channel Amplifier
CP-1650	Sixteen Channel Amplifier



Integration Designer® Programming Software



It's Under Control®